

WAFER BUTTERFLY VALVE

5.26

Application:

Butterfly valves were designed for industrial applications, water and steam distribution systems, fire protection, heating and plumbing, air and weak acid systems to open, close and in interim positions to adjust.

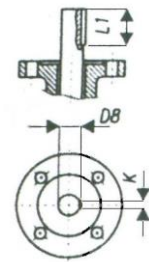
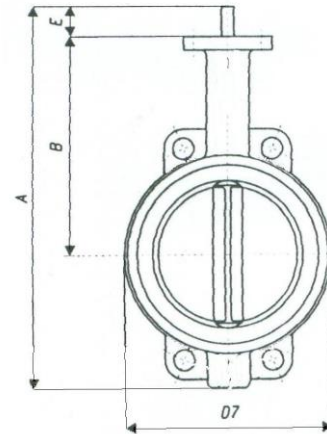
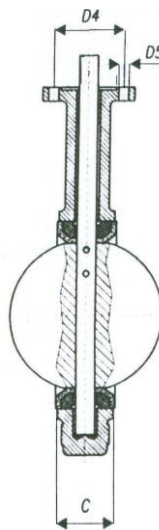
Face to face size: DIN3202

Working temperature: (-10) + 120°C

Method of operation:

- Standard handle
- Gear operator
- Electromechanic actuator
- Pneumatic actuator

DN 50 – 800
PN 10/16



Description:

	Materials
Body	GGG40 – ductile iron
Disc	GGG50 nickel plated
Seat	EPDM
Shaft	C45 – carbon steel
Handle	Carbon steel
Bushing	DN50-300: PTFE DN 350-800: Bronze

	A	B	C	D4	D5	D7	D8	K	E	L1	Weight
DN 50	273	161	43	50	8	100	12,6	3	32	15	3,5 kg
DN 65	296	175	46	50	8	120	12,6	3	32	15	4,3 kg
DN 80	308	181	46	50	8	127	12,6	3	32	15	4,9 kg
DN 100	346	200	52	70	10	156	15,77	5	32	20	5,8 kg
DN 125	372	213	56	70	10	190	18,92	5	32	20	8,3 kg
DN 150	396	226	56	70	10	212	18,92	5	32	20	9,6 kg
DN 200	480	260	60	102	12	268	22,1	5	40	20	14,8 kg
DN 250	540	292	68	102	12	325	28,45	8	40	25	22,8 kg
DN 300	624	337	78	102	12	403	31,6	8	40	25	33,1 kg
DN 350	680	368	78	102	12	436	31,6	8	45	25	44,1 kg
DN 400	760	400	102	140	18	488	33,15	10	51,2	45	55,8 kg
DN 500	905	480	127	140	18	593	41,15	10	64,2	56	135,9 kg
DN 600	1091	562	154	165	22	693	50,65	16	64,2	58	212,3 kg
DN 700	1160	640	165	-	-	895	-	-	-	-	440 kg
DN 800	1265	700	188	-	-	1015	-	-	-	-	498 kg

Industrial Valve Trading Ltd.

H-2234 Maglód, Mendei út 2.

Tel./Fax: +36-29-325-133, -326-133

mvv.hu info@mvv.hu