



BUTTERFLY VALVE FOR LUG GAS

5.31

Application:

Oil and gas industry, oil products, gas, natural gas, biogas pipelines shut-off valves. And built-in compressed air and sewage systems too.

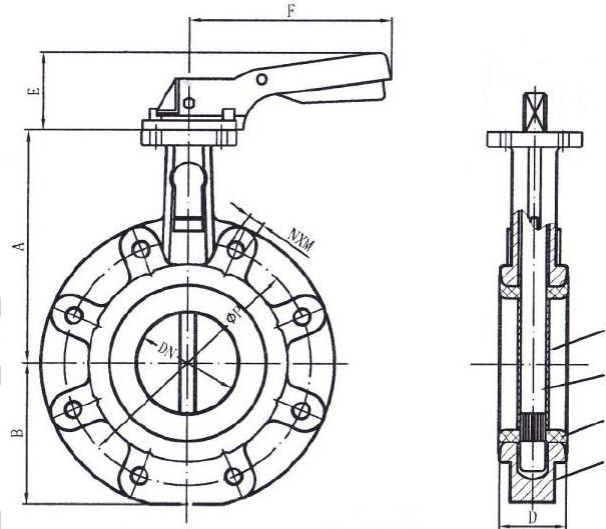
Face to face size: DIN3202

Working temperature: (-20) – 80°C

Method of operation:

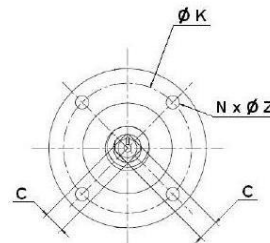
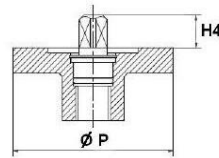
- Standard handle
- Gear operator
- Electromechanic actuator
- Pneumatic actuator

DN 50 – 200
PN 16



Materials:

Description	Material quality
Body	GGG40 – cast iron
Disc	AISI 316 stainless steel
Seat	NBR
Shaft	SS410 – stainless steel
Handle	Aluminium
Bushing	PTFE +NBR



	A	B	E	H	L	ØP	H4	ØK	NxØZ	C	Weight	Nm
DN 50	77	137	43	70	195	65	32	50	4X7	9X9	3,3	16
DN 65	88	142	46	70	195	65	32	50	4X7	9X9	4,1	28
DN 80	95	158	46	70	195	65	32	50	4X7	9X9	5,4	33
DN 100	107	180	52	70	195	65	32	50	4X7	11X11	6,2	53
DN 125	122	192	56	71	278	90	42	70	4X9	14X14	9,7	81
DN 150	144	215	56	71	278	90	42	70	4X9	14X14	11,8	119
DN 200	171	242	60	40	355	125	36	102	4X11	17X17	18,3	194

M/V-IG

Industrial Valve Trading Ltd.
H-2234 Maglód, Mendei street 2.
Phone/Fax: +36-29-325-133, 326-133
www.mvv.hu info@mvv.hu

BM1-1118
TÉRT KÉSZÍTÉSÉRE 001